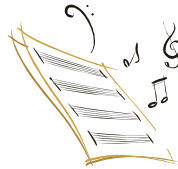


Music Therapy in a Palliative Care setting with Jubal's Daughters

North Perth Community Hospice invites you to this workshop

Date: Friday, October 3, 2008
Time: 1-4 pm



Location: Listowel Kin Station
Binning Avenue West



North Perth Community Hospice is thrilled to welcome Jubal's Daughters to Listowel as part of our 15th anniversary celebrations.

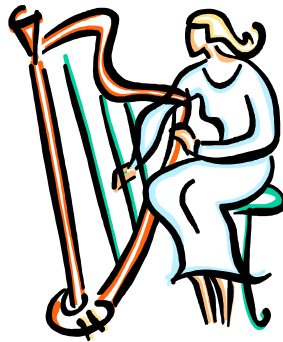
Hospice Contact via email:
npch@porchlight.ca
Office: 519-291-5141
Registration starts
September 1, 2008

Anita Leschied and Averil Spence-Clarke will be running a workshop for caregivers in a palliative care setting and anyone else in the community interested in music therapy. They will be bringing a Vibroacoustic Chair, harp, flute and will run through some exercises and discussions.

Sign Up Now
Registration is \$10
Seating is limited

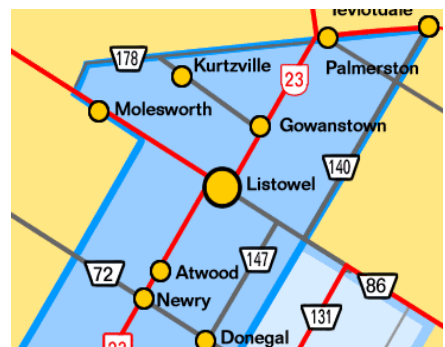
“Harp therapy is a relatively new field of research and practice which explores the beneficial effects of the timbre of the harp. The harp, with its soothing timbre and spiritual associations, has been revered as a healing instrument by many cultures for thousands of years.

When therapeutic harp music is played, recipients may receive beneficial effects such as increased relaxation, improvement in sleep, decreased pain and anxiety, stabilization of vital signs and improvement in mood. An end-of-life music vigil can also help a patient to achieve a peaceful transition.”



www.harptherapy.com

Location Details:



Coming from the West : Continue along Highway 86, past the Highway 23 south junction. There is a pedestrian traffic light as you enter town. At the top of the hill you will see Victoria Avenue. Turn Left. Go North three blocks and turn left onto Binning Street. The Kin Station is there.

Coming from the Highway 23, South: Turn Right at highway 86/Main Street. There is a Petro-Can on the corner. You will cross a pedestrian traffic light as you enter downtown. At the top of the hill you will see Victoria Avenue. Turn Left. Go North for three blocks and turn left onto Binning Street. The Kin Station is there.

Coming from the East: Go West through downtown core—Highway 86 becomes Main Street through town. After you pass the Eaton Funeral home (on your right) watch for Victoria Avenue. Turn Right, head North for 3 blocks and then turn Left onto Binning Avenue. Kin Station is there.

Coming from the North: When you arrive at the traffic lights on Main Street, turn right. Head West on Main Street After you pass the Eaton Funeral home (on your right) watch for Victoria Avenue. Turn Right, head North for 3 blocks and then turn Left onto Binning Avenue. Kin Station is there.